



The med.



The Med. [mediterranean]
is not just your home by the Mediterranean (North
Coast), **1. *this is a destination that lives within
you,***

Taking you to our Mediterranean:



100,000 sqm
Beach Front Area



49 m
Total Elevation

800 m
Coastline



307 Feddan
Land Area



110,000 sqm
Swimmable Lagoons



70%
Villas

A True North Star

Your home at The Med. is strategically located in the new heart of the North Coast, and just at the forefront of the main roads from Cairo with proximity to the area's airports to give you the optimum convenience whether you choose to drive or fly.



15 Mins Dabaa Road	30 Mins Sidi AbdelRahman	35 Mins Sidi Heneish	40 Mins El Alamein Airport	1 Hour Marsa Matrouh	2 Hours Alexandria	2 Hours Borg Elarab Airport	3.5 Hours Cairo
------------------------------	------------------------------------	--------------------------------	--------------------------------------	--------------------------------	------------------------------	---------------------------------------	---------------------------

A VARIETY OF AUTHENTIC BEACH EXPERIENCES



1

The Peninsula

Your Private Tropical Serviced Island

2



by



CAMPBELL GRAY
HOTELS & RESORTS

3

The Waterfall Lagoons

A Serene Water Spine

4

The River Walk

Your Pleasure Walk to the Beach

5

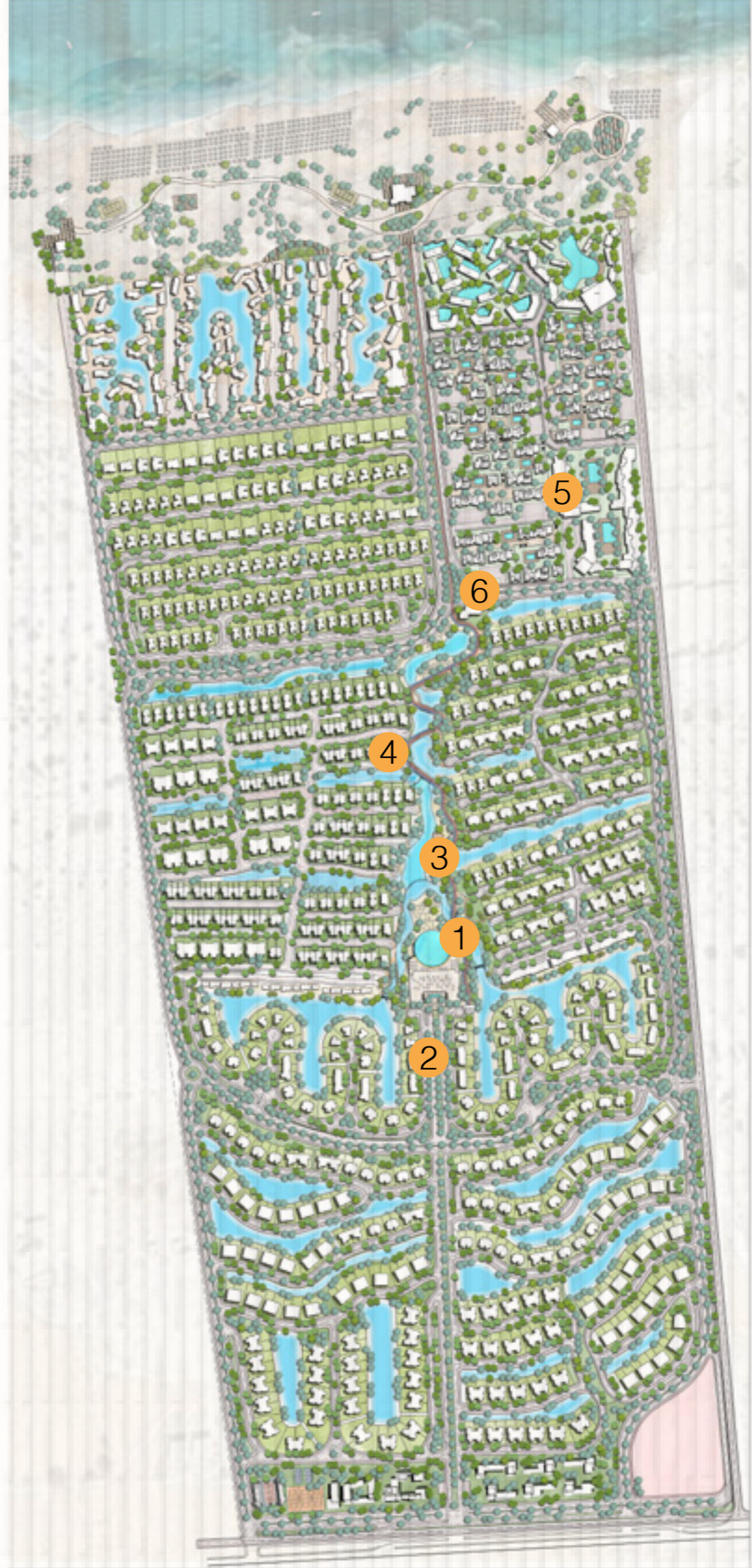
By the Beach

A Small Mediterranean Town Experience

6

Sustainability Park

The Green Park



The Peninsula

Your Private Tropical Serviced Island



"The peninsula is the charming heart of The Med!"



8,900 sqm island

The peninsula is the charming heart of The Med, located in the center of the community and lined with magical white sandy palm tree beaches overlooking turquoise lagoons.

This 8,900 sqm island is fully serviced by Le Gray and only a short walk from your home.



The Waterfall Lagoons

A Serene Water Spine



As the water flows from the highest point of the land, it creates a series of waterfalls and small lagoons lined with sandy banks and indigenous vegetation carefully planed to create pockets of natural gems perfect for meditation, swimming or simply walking through.



The River Walk

Your Pleasure Walk to the Beach

A curated walking experience of sounds and sights that takes you through waterfalls, lagoons and greenery all designed to be shaded naturally so you and your family can enjoy an effortless walk, jog or a bike ride to the beach.



*"A curated walking
experience of sounds
and sights"*





By the Beach

A Mediterranean Town Experience

Walk barefoot from the beach and find your favorite corner café in the organic alleyways of By The Beach.

A place for everyone, this Mediterranean town will have restaurants, small shops, the finest 2 boutique hotels in the area, and night life experiences right on the beach.





"Exceptional Service with a Mesmerizing View"



by



CAMPBELL GRAY
HOTELS & RESORTS

Overlooking the Peninsula, this pool deck clubhouse features a 1,800 sqm circular infinity pool overlooking the sea horizon, the waterfalls and peninsula below.

All day dining services for you and your guests by Le Gray.



*"The latest in outdoor fun
games and sustainability
lessons"*

Sustainability Park

The Green Park

A fun and green learning experience for the future generation.

The park will be an edutainment experience fun for kids and adults at the same time. Combining the latest in outdoor fun games and sustainability lessons on how to keep our planet well and happy, your time in the park will surely be rich in both joy and benefit.



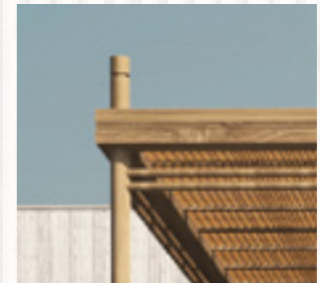
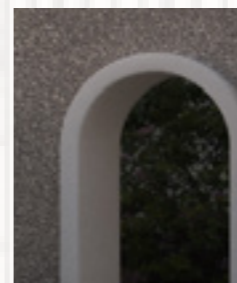
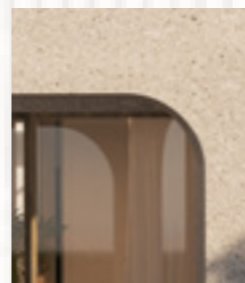


Contemporary Mediterranean Architecture

Designed to take in the north breeze and merge naturally with the environment.

Soft architectural lines that curve and seep effortlessly into the surroundings making every home a natural extension of the landscape.

The all north facing homes are designed to encourage light and increase views while retaining as much of the magical northern breeze we all seek in our coastal homes.



Homes of
The med.



Sustainable Mediterranean Architecture



making every home
a natural extension of the landscape.



Personalized Homes

Choose from a variety of refined design options to customize the exterior and interior of your home to match your unique personality.



"Make your home truly your own"





Passion
in every Detail

Carefree Beach Experience

We thought of every detail.

As we planned the services on the beach, we thought of all the annoying chores beach goers experience and removed them all.

The beach will always be ready for you.

Beach personal storage cabins:

Why carry all your beach belongings back home when you can just leave everything secured in your storage cabin! An innovative solution that will encourage you to walk carefree to the beach without the inconvenience of carrying anything back from or to the beach.

Icebox refill service:

Leave your icebox in your storage cabin and once you arrive to the beach, we will refill it for you with ice and your favorite drinks right there on the beach.





LE GRAY

Exceptional Services All Around

All Mediterranean villas will have access to Le Gray's specialty hospitality services, from housekeeping to a menu of catering services as well as special privileges in booking priorities in The Med's Le Gray hotels.



Our Partners

Campbell Gray,

Being focused on creating and operating high-end boutique hotels in Europe, Middle East, and Africa (Kings Polo in Sheikh Zayed, Alex lake in Zurich, Palacio De Canavezes in Portugal, and Le Gray in Beirut. They are offering an exceptional boutique hotel experience and much more.



CAMPBELL GRAY
HOTELS & RESORTS



Mohamed Fares,

CEO of ALCHEMY architecture and Chief Designer of ALCHEMY design studio, a leading Egyptian design firm that focuses its creative approach on a multi-cultural understanding that is inspired by different urban narratives. Core services in architecture, interior design, branding and product design place a high value on enhancing the human experience with a sensible vision for culture, environment and technology. ALCHEMY architecture seeks to unleash unexplored dimensions and impalpable atmospheres that transcend everyday life.



Alchemyarchitecture



people[®] & places.

authentic living experiences



We are the next generation community makers, creators of authentic, sustainable, young and positive everlasting human experiences that ultimately create value for our community.

We design and build soulful people-focused neighborhoods and genuine experiences that celebrate and stimulate connections amongst the community & with nature.

We ultimately bring all our forces to masterplan and design for these values.

Our community is our companions and we are defined by their smiles, their wellbeing and ultimately their respect and trust.

People & Places is introduced by Khaled El Assal, Mohamed Khaled El Assal, Karim Khaled El Assal, and Nabil Amasha. The founders have been leaders of the real estate industry, have designed, developed, and delivered superb mixed use masterplans and communities in Egypt.

**people[®]
& places.**
authentic living experiences

www.peopleandplacesint.com

Zayed Showroom

Building (B4), Unit (405) - (Fourth) Floor - Capital Business Park
project - Sheikh Zayed - Giza.

North Coast Showroom

Hacienda White - Commercial Unit (29) - North Cost - Egypt.